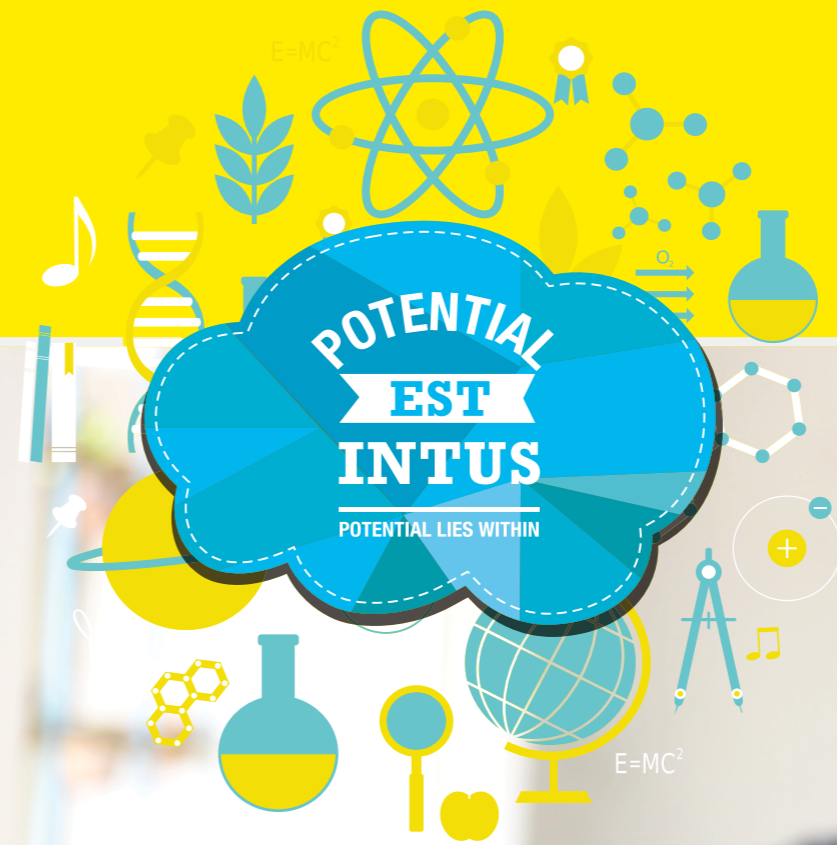


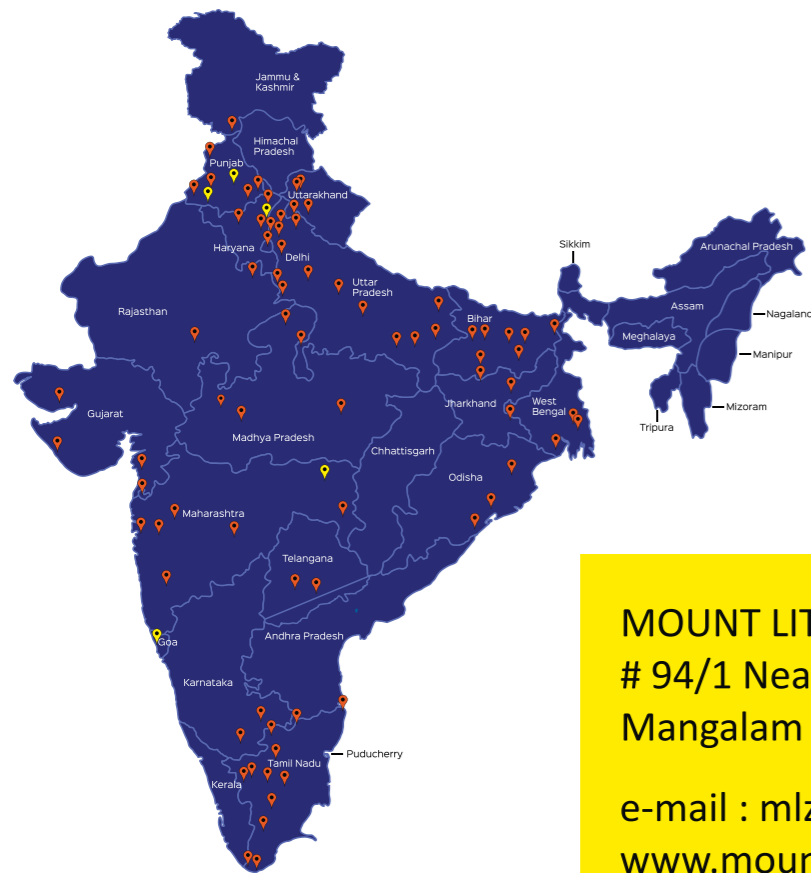
EVERY CHILD IS
A THOUGHT
IN THE MIND OF GOD,
AND OUR TASK
IS TO RECOGNISE
THIS THOUGHT
AND HELP IT
TOWARD
COMPLETION,

- EBERHARD ARNOLD
(German writer and philosopher)

Mount Litera
Zee School
Great School. Great Future
Tirupur



INTELLIGENCE PLUS CHARACTER,
THAT IS THE GOAL OF TRUE EDUCATION,
- MARTIN LUTHER KING



Pan-India presence
87 operational schools across India

19 states

www.mountlitera.com

MOUNT LITERA ZEE SCHOOL
94/1 Near VGP Lay out, Poomalur (po)
Mangalam to Palladam road ,Tirupur - 641 663

e-mail : mlzstirupur@gmail.com
www.mountliteratirupur.com

L - 0421 2345601/02/03
M - 73737 20232 / 96777 20223

SPREADING THE FRUITS OF KNOWLEDGE.
ACROSS REGIONS, ACROSS STATES,
ACROSS CITIES.



Brand Trust Report,
India Study 2015

Indian Educational
Congress in 2015

Welcome to Mount Litera Zee School, an inspiring campus that creates leaders for the 21st century.

At Mount Litera Zee School (MLZS), we create an ecosystem that celebrates and nurtures the potential that lies within each child. We do so by delivering the nationally accepted CBSE curriculum in a dynamic and unique manner.

OUR VISION

- ▶ To create an excellent educational institution synthesizing the human values with the highest quality of teaching - learning using modern technology - driven tools for preparing a well - rounded personality for our society.
- ▶ To shape global minds on the Indian soil. To ensure this, the school gives every student an access to world - class infrastructure and innovative curriculum that promotes the all - round development of the child imbibing traditional values.

OUR PHILOSOPHY

Every aspect, action and decision at Mount Litera Zee School is governed by a single, simple principle - What's Right for the Child (WRFC). This helps us in child centered education and ensures single - minded devotion to their growth and development.

OUR BELIEF SYSTEM

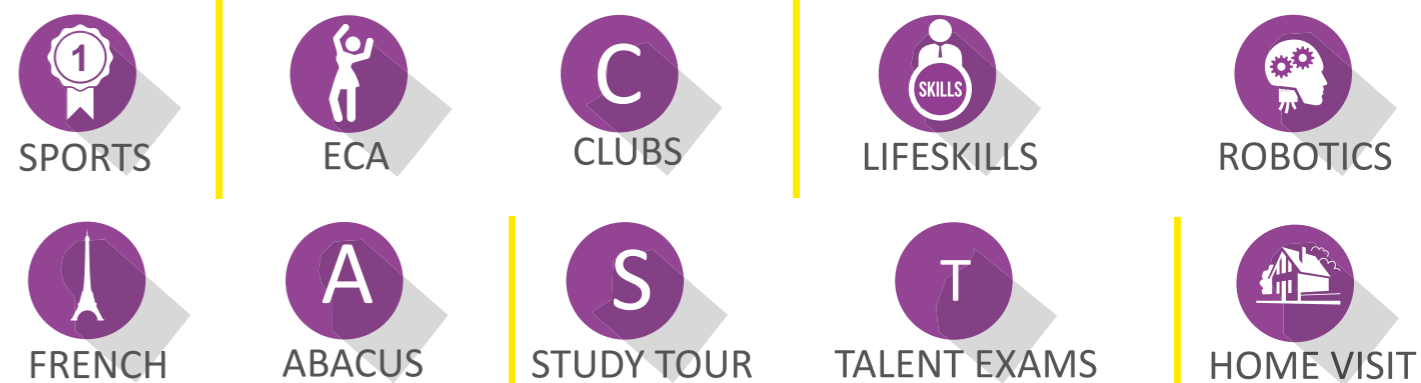
- ▶ Children are not just roll numbers, they are **UNIQUE INDIVIDUALS**.
- ▶ Every child is talented. Schools just need to figure out, where that talent lies.
- ▶ A school's role is to develop whole individual, not just completing the syllabus.
- ▶ Holistic development needs partnership between school and parents.
- ▶ Schools need an integrated approach on the child.

HOLISTIC EDUCATION BY ADHERING TO THE PHILOSOPHY OF WHAT'S RIGHT FOR THE CHILD (WRFC)

SCHOLASTICS



CO-SCHOLASTICS



UNIQUE FEATURES

LR - LEARNING RESOURCES | BLD - BLENDED LEARNING DESIGN
 MAP - MEASURES OF ACADEMIC PROGRESS | WC - WEEKLY CHALLENGE
 BNF - BRAIN FACTORY | PUMA - PARENTS ' UNIQUE MOBILE APPS

GOING BEYOND ACADEMICS

